

ECO SMART COMPUTERIZED WATER DISPENSER

U0-9505 Series

ECO
SMART



Awarded the Taiwan Excellence Awards



Green Mark



MIT



CNS Mark



TAIWAN
EXCELLENCE
2014



Energy Label



ECO-FRIENDLY
INNOVATIVE
NEW DESIGNS



ECO SMART Artificial Intelligence adapts and adjusts the dispenser according to usage and environment to help save energy and water!

ECO SMART COLD



COLD

ECO SMART AI can determine the season and adjust cold water temperature accordingly. Cold water will be chilled less during colder seasons to save energy (chilled to 20°C instead of usual 10°C).

ECO SMART HOT



HOT

ECO SMART AI can determine the usage capacity and determine how much water to store, saving not only water and but also energy required to preserve temperature.

ECO SMART AI functions can be turned off.

COLD SYSTEM OFF



Turn cold system off when not required to maximize energy saving!

SLEEP MODE



Allows users to pre-set time and period of "Sleep Mode" to conserve energy when water dispenser is not in use. System automatically activates Sleep Mode and resumes to normal operations according to its settings. Highly recommended for offices, clinics, hospitals, etc... environment to save costs during off-work hours and weekends.

W435 x D480 x H1470 (mm)

USER-FRIENDLY DESIGNS



Sleep Mode Resume

- Deactivate Sleep Mode temporarily to resume to normal operations. The dispenser will return to Sleep Mode after idle for preset hours (default setting at 2hrs)



Sound Options

- Choose between silence, beep sound or voice response mode.



Continuous Flow

- Allows continuous dispense of water without holding the button. Continuous dispense time (sec) can be preset!



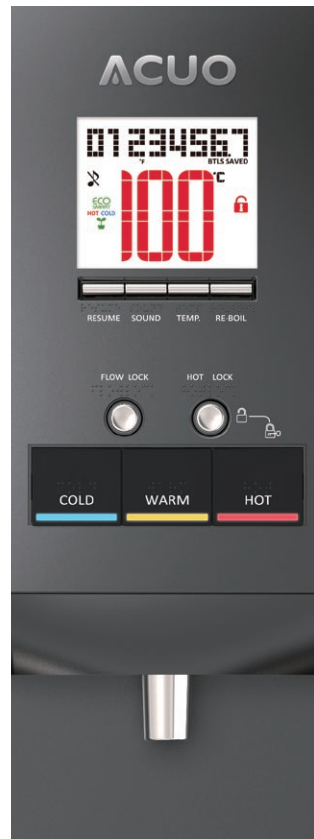
Filter Replacement Notification

- Notification can be set for up to 5 filters base on both time (mo/yr) and usage capacity (liter).



Dual-Layered Water Dispenser Outlet

- Separates cold & hot water
- LED bulb lights up dispense area



Large FSC-LCD Display

- Innovative color LCD display with lifespan of 10,000+ hrs!
- LCD can be preset with energy saving mode.



Temperature Display

- Displays cold, warm and hot water temperature in the respective tanks.



Hot Water Lock

- Prevents scalding accidents.



Re-Boil & Heating

- Activate heating to 100°C anytime. Icon flashes when hot temperature is too low and boiling is activated.



Chilling

- Notifies when chilling system is on/off and flashes when cold temperature is too high and chilling is activated.

CLEAN & SAFE DRINKING WATER

- Guaranteed Boiling of cold, warm and hot water before dispensed. Automatically suspends water supply when hot water is below 90°C to prevent untreated tap water.
- Step Inlet ensures tap water does not mix with filtered and boiled water.



Automatic Sterilization System

- Allows users to pre-set time and period of complete sterilization (1-7 times per week, on different hours each day) with boiling water and flushing of all pipes. System automatically activates Sterilization according to its settings.



Water Temperature Preservation

- Cold Water : can be set at any temperature between 10°C to 30°C, or turned off.
- Warm Water : can be set at any temperature between 30°C to 50°C, or turned off.
- Hot Water : can be set at any temperature between 50°C to 98°C.

Bottle Saved Counter

- Built-in counter that calculates and records the number of bottles saved by using the dispenser! Eco-friendly actions visualized! (default setting at every 600cc = 1 bottle)



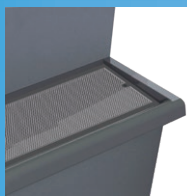
SAFETY CHECK DESIGN

Performs automatic self-check to ensure all functions are operating safely. The dispenser disconnects power and water supply when experiencing potential malfunction.



- Detects water shortage or leakage.
- Equipped with Electricity Leakage Breaker and temperature fuse.
- Notifies users when cold or warm water temperature is too high and suspends dispense to ensure safety (can be turned off).
- Suspends operations when tanks are empty and when compressor or temperature sensor errors.

ACCESSORIES



Wide Drip Tray with mesh lid to prevent foreign objects down the drain. Removable mesh lid secured with screws designed for maintenance use.



Integrated Water Fountain Drip Tray with bubbler also available as an optional accessory.

IN-BUILT FILTRATION SYSTEM

Choose between 2 stage PP + ACF Filter or 4-stage RO Filtration

UF-10P5C DUAL-PURPOSE Super Refine Activated Carbon Fiber Filter



2 in 1 Structure
PP + Activated Carbon

Step One:
5 micron PP Filter
Effectively filters out mud, sand, rust and other particles and sediments.

Step Two:
Activated Carbon Filter Removes Color, odor and extracts chemicals such as chloride, pesticides and heavy metals from the water.

UF-22 60G R.O. Membrane

NSF



0.0001 micron filters out virus, germs, toxics and heavy metals such as mercury, cadmium... etc, providing clean and safe drink water.

UF-21 Disposable Post Activated Carbon Filter



For the final polishing of water in Reverse Osmosis systems, to remove unpleasant taste and odors from the water stored in tank, to produce cleaner, clearer, better tasting water.

SPECIFICATIONS

Hot Water 90°C ± 10°C ; Cold Water 15°C ± 10°C
Voltage can be customized based on requirement.

| Model | Type | Voltage | Hot Power Consumption | Cold Power Consumption | Hot Tank | Cold Tank | Warm Tank | Hot Water Capacity | Cold Water Capacity |
|-----------|-------------------|-------------|-----------------------|------------------------|----------|-----------|-----------|-----------------------------|---------------------|
| UO-9505AG | Cold / Warm / Hot | 110V / 220V | 1100W / 2000W | 245W | 22L | 4L | 10L | 32/hr(110V) 60L/hr(220V) | 17L/hr |
| UO-9505BG | Warm / Hot | 110V / 220V | 1100W / 2000W | - | 22L | - | 10L | 32/hr(110V) 60L/hr(220V) | - |

INNOTRIO CO., LTD. Tel: +886-2-2291-9000 Email: info@9000.com.tw Website: www.acuowater.com

Please refer to actual product samples for accurate proportions and colors. We reserve the right to change product specifications without prior notices. 19/05 PL-703-2